

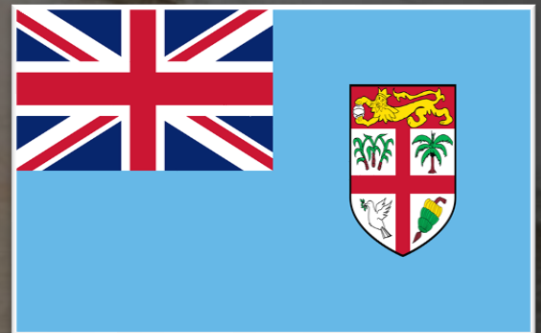
TRANSFORMING EARLY CHILDHOOD DEVELOPMENT IN FIJI

An Innovative, Holistic, & Sustainable Approach

‘EMPOWERING CHILDREN, FAMILIES & COMMUNITIES’



ECD GLOBAL



INTRODUCTION



THE POWER OF EARLY CHILDHOOD DEVELOPMENT

Investments in ECD have the most lasting impact and offer substantial returns



Supporting data

- Every \$1 invested in quality early childhood programs yields a return of \$7-\$10 (**Heckman, 2012**)

- Children who participate in high-quality ECD programs are 40% more likely to graduate from high school and earn 25% higher wages as adults (**UNICEF, 2019**)



FIJI'S ECD LANDSCAPE:

Challenges and Opportunities

Limited Government Resources:

Only 18% of children receive early childhood support

Disparities in Access:

75% of children in rural areas and villages lack access to ECD programs

Huge potential for innovative, state-of-the-art approaches to supplement and augment existing efforts



OUR INNOVATIVE SOLUTION:

A Technology-Driven, Holistic Approach



Leverage Starlink satellite internet and solar power to connect remote communities



Adopt a model similar to Habitat for Humanity:
Build and test a blueprint in a showcase village or koro



Select a central hub village and feed from surrounding areas



Provide training in responsive caregiving, early stimulation, and positive discipline



Offer a holistic approach that addresses multiple aspects of child development



Nutrition programs focusing on locally-sourced, nutrient-dense foods



Community hall construction and involvement to foster social cohesion and support



Education and skill-building for parents and caregivers, including financial literacy and entrepreneurship

POTENTIAL STRATEGIC PARTNERSHIPS & COLLABORATIONS

Universities & Research Institutions



Collaborate on research, program development, and impact evaluation

Corporate Sponsors

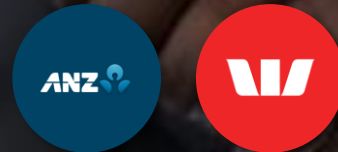
Educational Software Companies



Technology Providers



Financial Institutions



Support through funding, resources, and expertise

NGOs & International Organizations



Partner to scale impact and share best practices



SUSTAINABILITY & FUNDING



Create artisanal centers to market unique, high-quality products made by local communities

Partner with online platforms like Etsy and Amazon Handmade to expand reach



ECD GLOBAL



Promote eco-tourism and authentic village experiences to attract visitors and funding

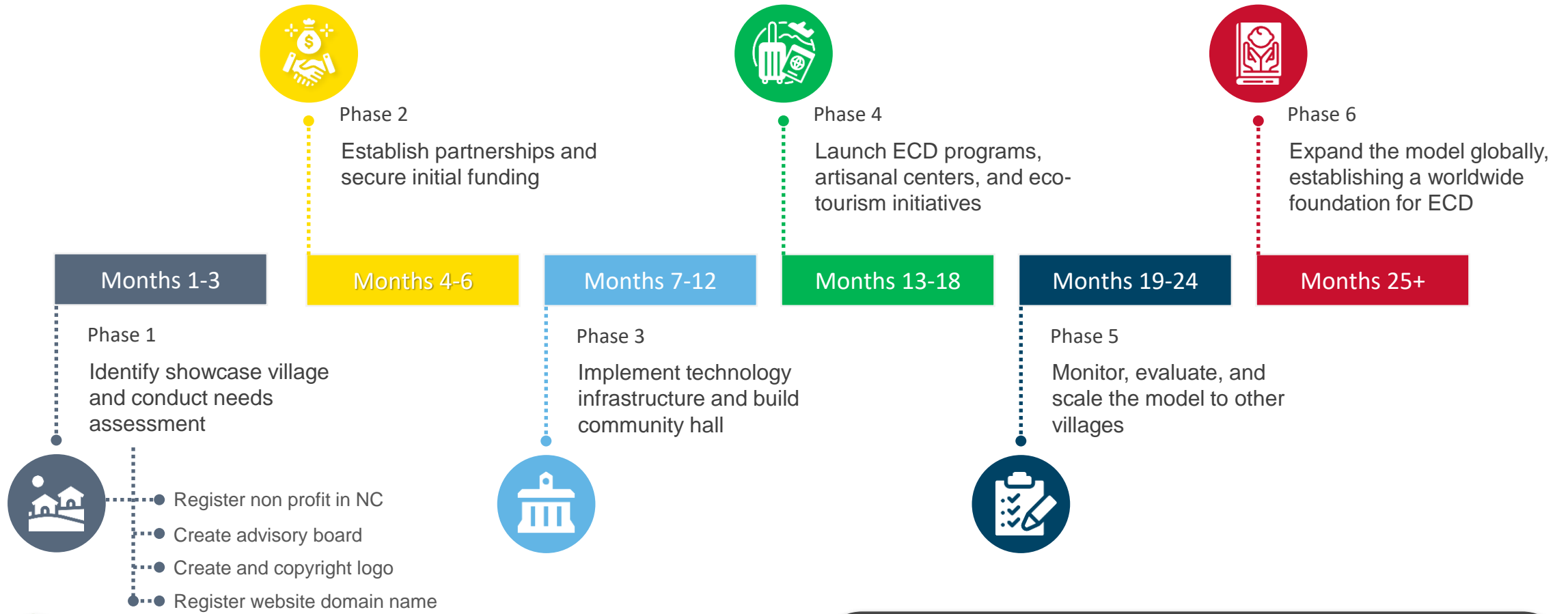
Collaborate with established eco-tourism operators and travel agencies



Offer high-value internships and study abroad opportunities for students from partner universities

Rotate interns and volunteers to ensure continuous support and fresh perspectives

IMPLEMENTATION ROADMAP



EXPECTED OUTCOMES & IMPACT

Increased access to quality ECD programs for 10,000 children in rural areas and villages within 3 years

Empowered parents and caregivers with knowledge and skills to support their children

IMPACT



80% of participating parents reporting increased confidence and engagement in their child's development

Improved child development outcomes across multiple domains (cognitive, social-emotional, physical)

IMPACT



30% increase in children meeting developmental milestones by age 3



50% reduction in stunting and malnutrition rates among participating children



ECD GLOBAL



Enhanced community engagement and economic opportunities through artisanal centers and eco-tourism

IMPACT



\$500,000 in annual revenue generated by artisanal centers and eco-tourism initiatives



200 new jobs created in participating communities

Creation of a global network of 500+ volunteers, researchers, and social entrepreneurs dedicated to advancing ECD

CALL TO ACTION

Invest in this innovative, holistic approach to ECD in Fiji and beyond



- Support our technology-driven initiatives to connect remote communities
- Contribute to the construction of community halls and ECD centers
- Fund nutrition programs and skill-building opportunities for parents and caregivers

Partner with us to transform the lives of children, families, and communities worldwide



- Collaborate with our global network of universities, NGOs, and research institutions
- Share your expertise and resources to scale our impact and reach more children in need
- Advocate for increased investment in ECD programs and policies

Join our global volunteer network and contribute to meaningful research and social entrepreneurship



- Participate in hands-on learning experiences and cultural immersion
- Conduct groundbreaking research to advance the field of ECD
- Develop innovative solutions to address the unique challenges faced by underserved communities

Together, we can build a brighter future for the world's next generation



- Unite under a shared vision of a world where every child has the opportunity to thrive
- Leverage our collective strengths and resources to create lasting, systemic change
- Inspire others to join our global movement and make a difference in the lives of children everywhere



"It is easier to build strong children than to repair broken men."

- Frederick Douglass

With the addition of specific **university partners, corporate sponsors, and high-value internship opportunities**, this presentation further emphasizes the project's strong **social entrepreneurship** focus and its potential for long-term, sustainable, and worldwide impact.

The **strategic partnerships and collaborations** highlight the project's credibility and feasibility, while the opening slides clearly position the initiative as a visionary endeavor with the power to transform lives globally.



FIJI

PARADISE ON EARTH



A photograph of a woman with blonde hair sitting on the ground, interacting with a young child. They are surrounded by other people in a rural setting, possibly a village. The scene is overlaid with a semi-transparent dark layer, and the text "THANK YOU" is prominently displayed in the center. The background shows several people standing near some structures, and the overall atmosphere is one of community and care.

THANK YOU